

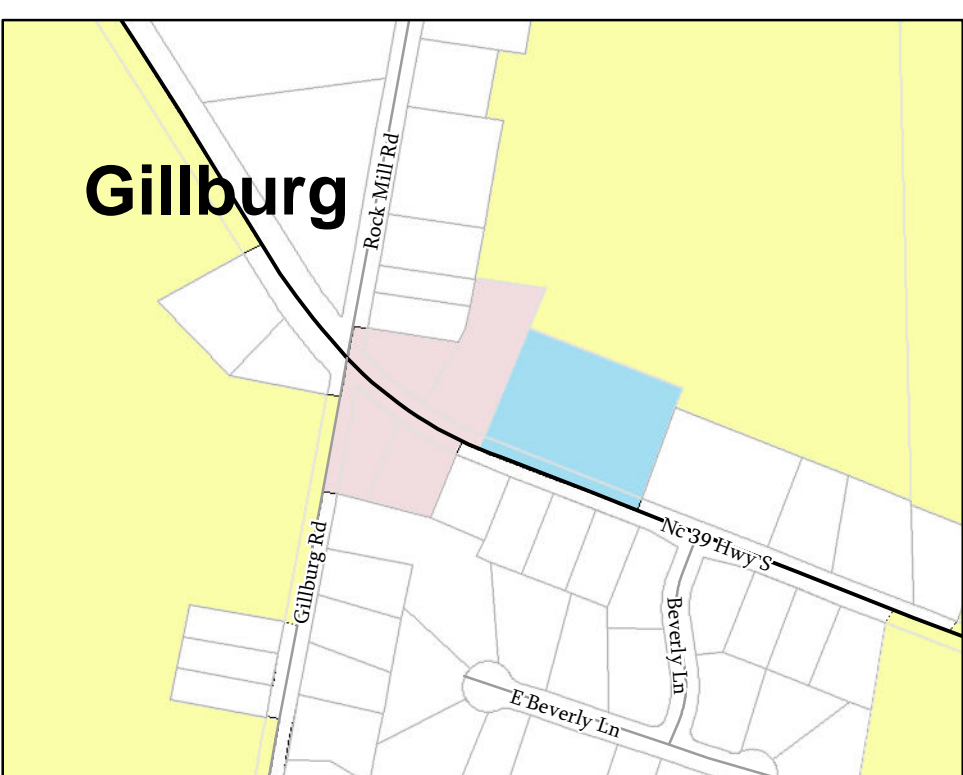
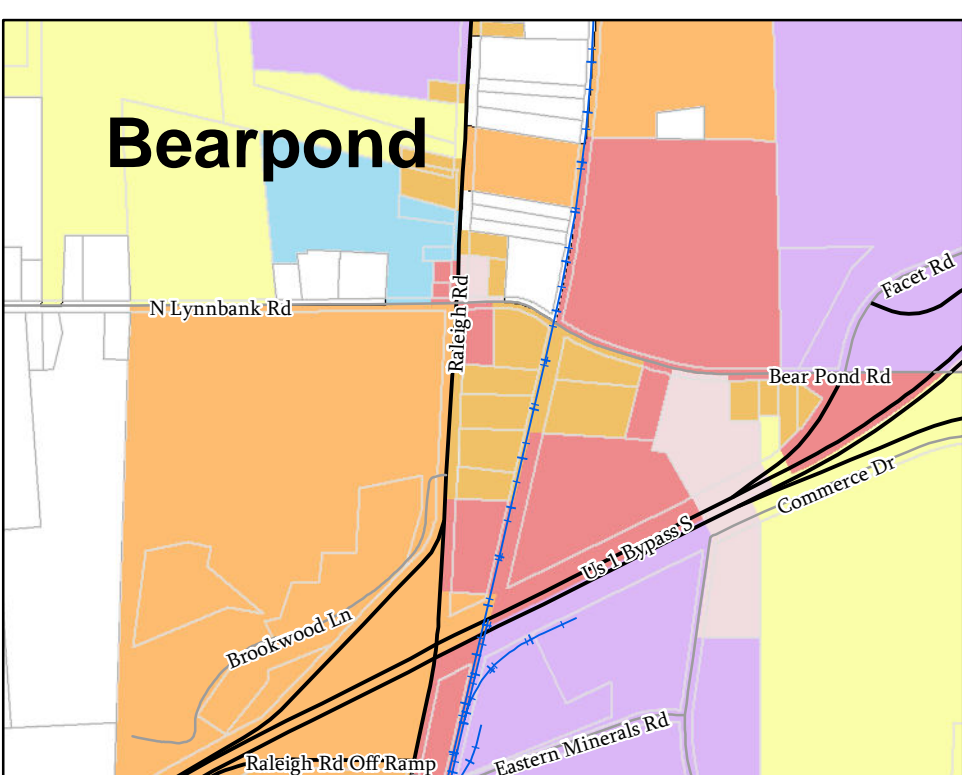
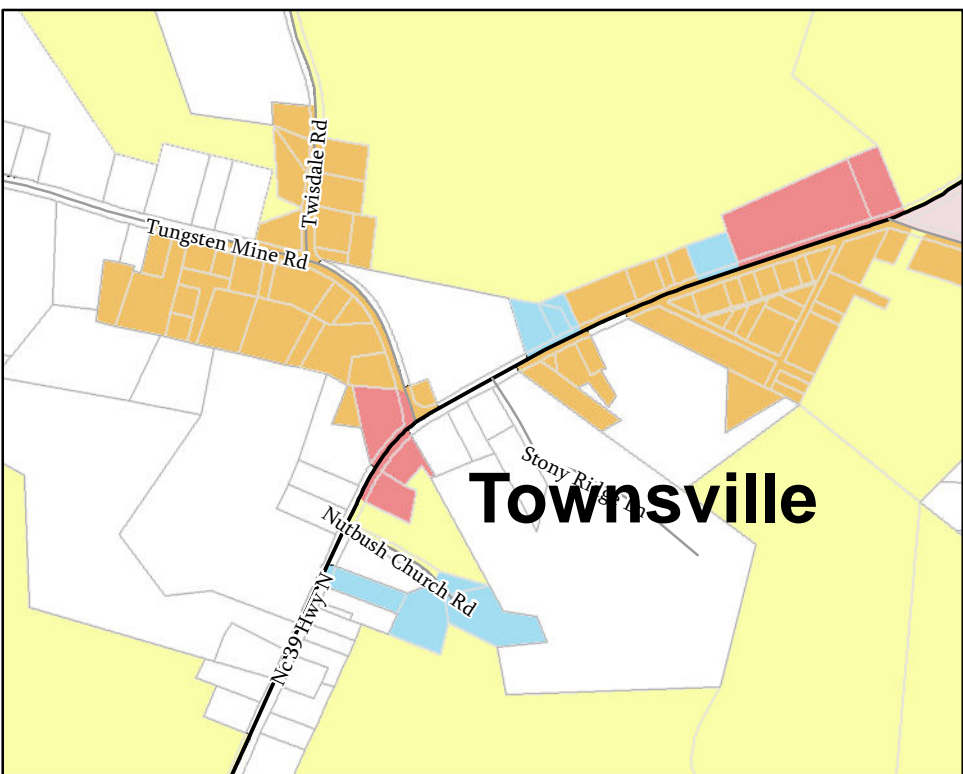
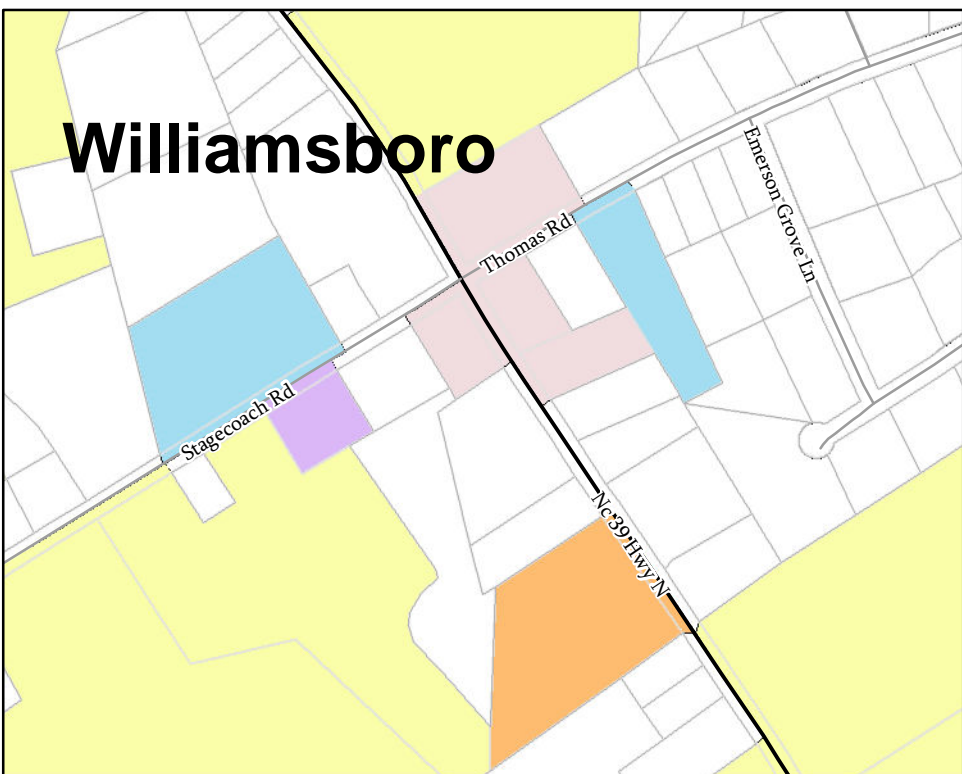
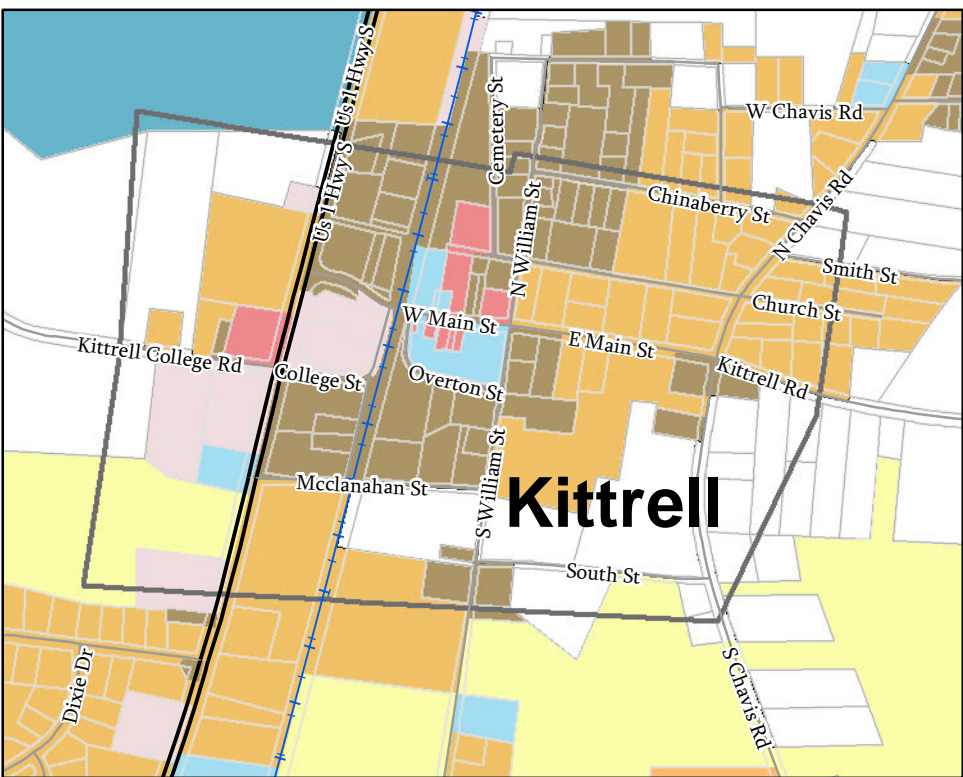
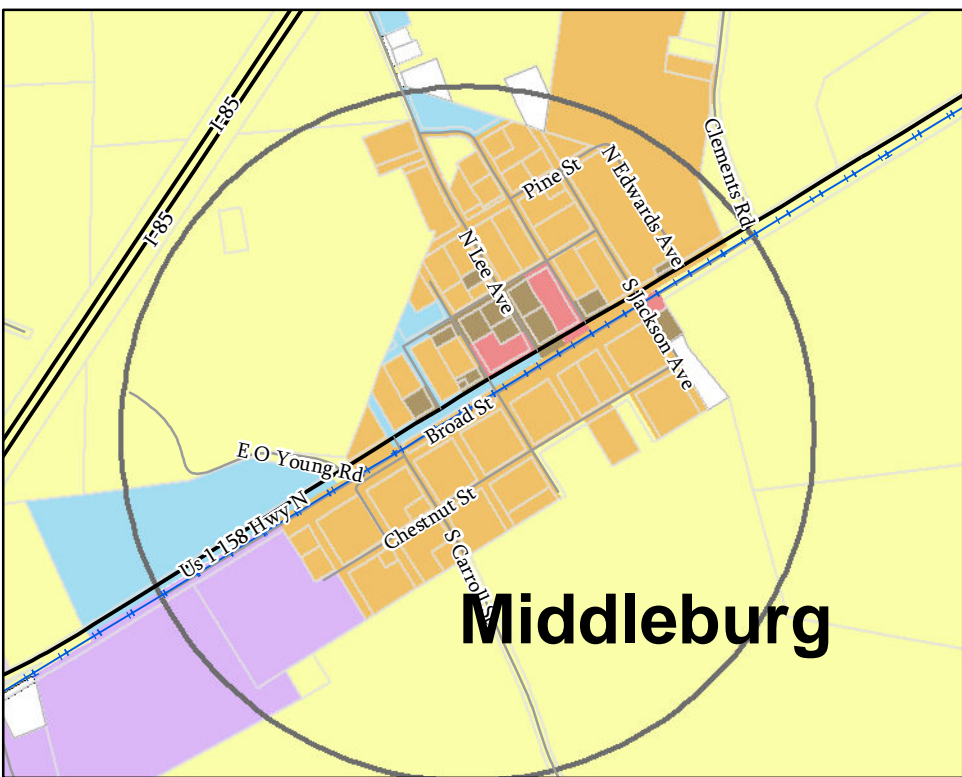
VANCE COUNTY

Proposed Countywide Zoning Map



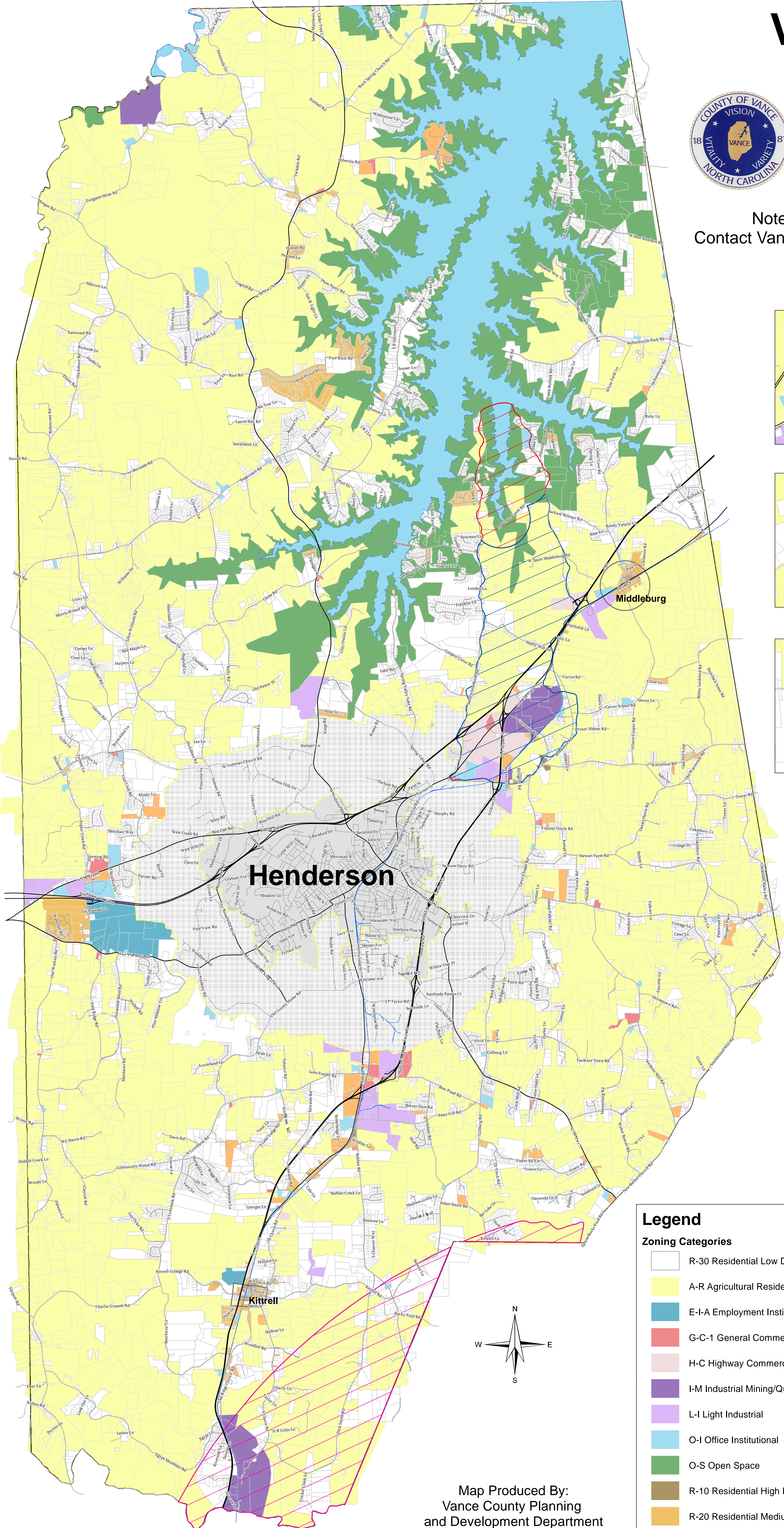
Adopted xxxxxxxx x, xxxx
Effective xxxxxxxx x, xxxx

Note: Zoning Designations Subject to Change!
Contact Vance County Planning and Development Department
For Current Zoning Designations



Map Amendments

xx/xx/xxxx ADOPTION



Legend

Zoning Categories

- R-30 Residential Low Density
- A-R Agricultural Residential
- E-I-A Employment Institutional Area
- G-C-1 General Commercial
- H-C Highway Commercial
- I-M Industrial Mining/Quarry
- L-I Light Industrial
- O-I Office Institutional
- O-S Open Space
- R-10 Residential High Density
- R-20 Residential Medium Density
- R-M-H-C Res. Manufactured Home Community

Watershed Overlay Zone

- WS-III-CA (Anderson Creek Critical Area)
- WS-III-BW (Anderson Creek Balance of Watershed)
- WS-VI (Tar Pamlico)

Municipalities

- City of Henderson (Zoned)
- Extra Territorial Jurisdiction (Zoned)
- Town of Kittrell
- Town of Middleburg

Map Produced By:
Vance County Planning
and Development Department
October 3, 2011 Edition

Map Scale: 1 inch Represents 0.58 miles